

KASTHALL

# MACRO MELANGE WALL-TO-WALL CARPET



# PRODUCT SPECIFICATIONS FOR MACRO MELANGE

A woven full-coverage bouclé carpet with a dense wool texture and smooth surface that is ideal for public spaces. Not only because of its durability, but also for its acoustic qualities and wide range of colors. An elegant, ribbed pattern with a mottled surface gives Macro a lively expression while at the same time acting as a clear but discreet background for larger contexts, where Häggå and Loop can coexist. Macro Melange is also available as area rug – in any size and shape. Design Gunilla Lagerhem Ullberg & Petra Lundblad.

PRODUCT TYPE: Woven bouclé wall-to-wall carpet

PILE MATERIAL: 80% wool and 20% polyamide (antistatic)

PILE HEIGHT: approx. 3 mm

PILE WEIGHT: approx. 800 g/m<sup>2</sup>

TOTAL HEIGHT: approx. 5 mm

TOTAL WEIGHT: approx. 2650 g/m<sup>2</sup>

ROLL WIDTH: approx. 400 cm

BACKING: pre-coat + textile secondary backing

ENVIRONMENT AND SUSTAINABILITY:

Meets the requirements for:

LEED v 4.1 (exkl USA),

BREEAM-SE 2017, BREEAM International,

Indoor Air Comfort Gold, ref IACG-42-03-10-2022

Sunda Hus: B

BVB: ID 152433 Accepted



Use Class:  
Class 32 (EN 1307)  
Commercial general



Castor chair suitability:  
Continuous use (EN 1307)



Electrical behavior:  
Permanent antistatic  
(EN 14041)



Thermal resistance:  
Suitable for underfloor  
heating (EN 14041)



Stair suitability:  
Continuous use (EN 1307)



Slip resistance:  
DS (EN 14041)



Acoustic properties:  
Impact noise reduction  
approx. 17 dB (EN 1307)



Acoustic properties:  
Sound absorption  
aw 0,15 (EN 1307)



Light fastness:  
≥ 5 (EN 1307)



Fraying resistance:  
Yes (EN 1307)



Dimensional stability:  
Yes (EN 1307)



Luxury class:  
LC1 (EN 1307)



Reaction to fire:  
Cfl-s1 (EN 13501-1)



CE MARK REGULATION (EU)  
Council Directive 89/106/EEC ref 2531-CPR-CXA10211



## CARE ADVICE WALL-TO-WALL CARPETS

All carpets retain their appearance for a longer time if you remove dirt and stains regularly. If you have a light, single-colour carpet you will naturally need to clean it more often than a darker, patterned one. Almost all dirt comes from outside.

If you want to prevent it from coming all the way in you can place a good-quality scraper mat outside the door and an entrance mat inside. Effective vacuuming is the easiest and most environmentally friendly cleaning method. It is also the most economical. When you vacuum regularly you remove all the loose dirt and dust.

## CLEANING ADVICE

We recommend that cleaning is carried out by a professional cleaning company.

At [www.kasthall.com](http://www.kasthall.com) you can read more about our materials, how to look after your carpet and find our stain guide.

## OTHER INFORMATION

*Important information when ordering wall-to-wall carpets and runners:*

- We recommend that our carpets are installed by professional carpet-fitters. Some carpets should be laid on underfelt with gripper strips, while others can be glued direct to the floor. Contact us for more information and laying instructions.
- Depending on the materials used and the different processes in production, dimensions of the carpet may vary by up to 3%.
- Note that variations in colour and texture can arise between batches of yarn and dye baths.
- Please note that certain restrictions apply to stitching of concave shapes/lines. For rugs with concave shapes/lines, please submit drawing to Kasthall prior to placing the order.
- All runners should be laid on an underlay that prevents them from moving on all types of flooring. This extends the life of the carpet and reduces the risk of slipping.
- In longer corridors the runner should be laid on underfelt with gripper strips.

## ENVIRONMENT AND SOCIAL RESPONSIBILITY

At Kasthall environmental work is a very natural part of what we do and what we stand for – today and for generations to come. Many of our products are compliant with known environmental standards. Our working environment reflects the creativity and quality that we strive for – in design, materials and manufacture. Read more about our environmental work and philosophy at [kasthall.com](http://kasthall.com).

## KASTHALL HEAD QUARTER

Fritslavägen 42 | 511 57 Kinna, Sweden | Phone +46(0)320 205 900 | [info@kasthall.com](mailto:info@kasthall.com)

For the latest updates of our collection, please visit [www.kasthall.com](http://www.kasthall.com)

All the designs shown here are protected under law. Kasthall have the property rights and distribution rights worldwide. Copying will be prosecuted.



KASTHALL.COM

# MACRO MELANGE

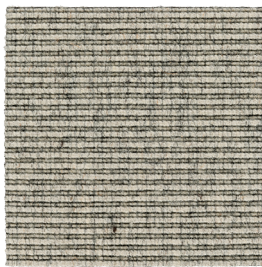
Woven bouclé wall-to-wall carpet  
80% wool and 20% polyamide (antistatic)



Beige 9203



Ochre 9205



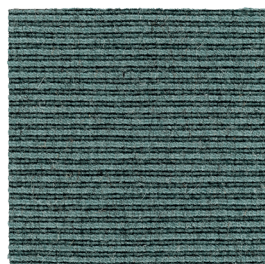
Light Grey 9211



Dark Grey 9214



Khaki 9233



Grey Green 9235



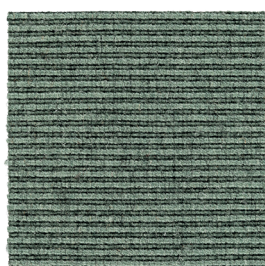
Denim 9245



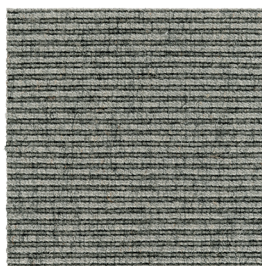
Scarlet Red 9247



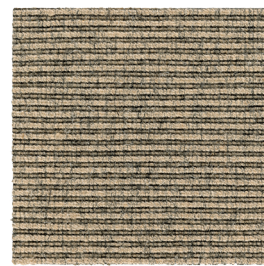
Ivy Green 9249



Salty Green 9250



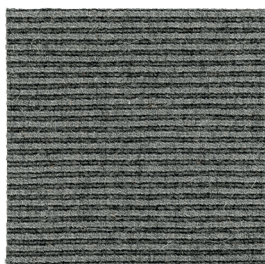
Pale Grey 9251



Ash Blond 9252



Muddy Khaki 9254



Natural Grey 9259



Pale Rust 9261

## KASTHALL HEAD QUARTER

Fritslavägen 42 | 511 57 Kinna, Sweden | Phone +46(0)320 205 900 | [info@kasthall.com](mailto:info@kasthall.com)

For the latest updates of our collection, please visit [www.kasthall.com](http://www.kasthall.com)

*All the designs shown here are protected under law. Kasthall have the property rights and distribution rights worldwide. Copying will be prosecuted.*



KASTHALL.COM