

KASTHALL

ARKAD FAMILY
GUNILLA LAGERHEM
ULLBERG



PRODUCT SPECIFICATIONS FOR ARKAD FAMILY

Arkad is a classic wool rug created in the ancient Swedish weaving tradition renowned for its abundance of patterns and colors. Arkad's designs can be varied infinitely depending on preference, through a selection of twelve different patterns based on either mixed or single-colored yarns. Through a play with patterns and color, our ambition is to challenge the conventional – combining bold graphic expressions and colors with more traditional shapes. Arkad thrives in the company of striking architecture and unique concept interiors. Choose from a total of 12 different patterns and 176 colors to create your own perfect Arkad.

PRODUCT TYPE: Woven rug in pure wool

WEFT MATERIAL: 100% wool

WARP MATERIAL: 100% linen

TOTAL THICKNESS: approx. 7 mm

TOTAL WEIGHT: approx. 2310 g/m²

SIZE (Checkerboard and Brick): Standard width: 85, 135, 165, 200, 280, 360, 440, 520, 600 cm. Or choose amongst our suggested sizes; 85x200 cm, 135x200 cm, 165x240 cm, 200x300 cm, 280x380 cm, 360x460 cm, 440x540 cm, 520x620 cm and 600x700 cm

SIZE (Wide Stripe, Narrow Stripe, Corduroy, Long Stripe, Small Check, Sugar Cube, Standing Brick, Block, Uni, Cubrick): Standard width: 70, 85, 135, 160, 195, 240, 290, 340, 390, 450, 500, 550, 600 cm. Or choose amongst our suggested sizes; 85x240 cm, 135x200 cm, 160x240 cm, 195x300 cm, 240x350 cm, 290x400 cm and 340x450 cm

COLORS: Choose between 176 colors; from a total of 44 mixed and 132 unicolored yarns to create your Arkad rug. You can find all color samples and color numbers at www.kasthall.com.

ENVIRONMENT AND SUSTAINABILITY:

Meets the requirements for Green Label Plus

BVB-id: 111071, Recommended



Wear classification:
(EN 1307) Class 32
Commercial General



Luxury rating:
(EN 1307) LC1



Acoustics properties: (EN 1307)
Sound insulation approx. 24 dB

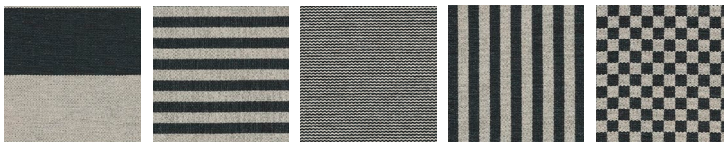


Acoustics properties:
Sound absorption α_w 0,15



Fire classification:
(EN 13501) CF-s1

THE FOLLOWING PATTERNS CAN BE COMBINED WITH EACH OTHER:



Wide Stripe 924 Narrow Stripe 925 Corduroy 936 Long Stripe 922 Small Check 927



Sugar Cube 932 Standing Brick 938 Block 937 Uni 924 Cubrick 935



Checkerboard 920 Brick 939

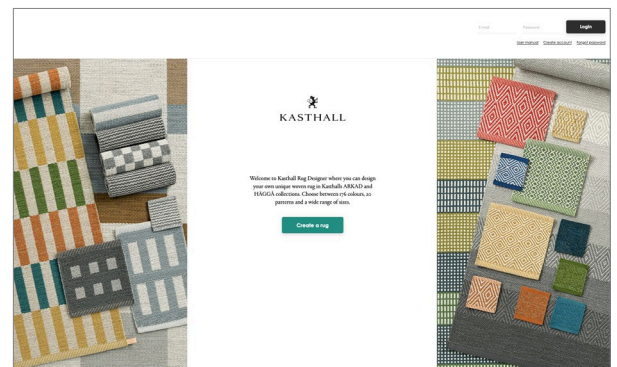
Checkerboard and Brick can be combined with all patterns in widths from 200 cm and up.

PATTERN REPEAT SIZE:

| Pattern | Width | Squares/Rectangles/Stripes |
|--------------------|---|---|
| Checkerboard 920 | approx. 85 & 135 cm approx. 165 cm approx. 200–600 cm | approx. 29x28 cm approx. 34x33 cm approx. 42x40 cm |
| Brick 939 | approx. 85 & 135 cm approx. 165 cm approx. 200–600 cm | approx. 4,5x28 cm approx. 4,5x33 cm approx. 4,5x40 cm |
| Wide Stripe 924 | approx. 70–170 cm approx. 175–600 cm | approx. 30 cm approx. 40 cm |
| Narrow Stripe 925 | approx. 70–600 cm | approx. 4,5 cm long |
| Corduroy 936 | approx. 70–600 cm | approx. 1 cm long |
| Long Stripe 922 | approx. 70–600 cm | approx. 4,5 cm wide |
| Small Check 927 | approx. 70–600 cm | approx. 4,5x4,5 cm |
| Sugar Cube 932 | approx. 70–600 cm | approx. 4,5x4,5 cm (report 9x9 cm, 4,5 cm on both sides) |
| Standing Brick 938 | approx. 70–600 cm | approx. 4,5x15 cm |
| Block 937 | approx. 70–600 cm | approx. 4,5x15 cm (report 9x20 cm + 5 cm ending) |
| Cubrick 935 | approx. 70–600 cm | approx. 4,5x9/4,5 cm (report 9x13,5 cm) |

RUG DESIGNER:

Our web-based Rug Designer program at www.kasthall.com lets you design your own rug easily. For inspiration, you can also see Arkad rugs that others have designed on our website.



ARKAD FAMILY

Design GUNILLA LAGERHEM ULLBERG
Woven rug in pure wool



CARE ADVICE WOVEN RUGS

To further extend the lifetime of your rug, Kasthall recommends a regular maintenance so that the rug may retain its shape and appearance. If you have a light, single-colour rug you will need to care for it more often than a darker, patterned rug. It is also a good idea to use a rug underlay to prolong the life of your woven rug and prevent it from slipping on any type of floor. Thorough vacuuming is the best, most economical and environmentally friendly method of cleaning. Beating or shaking a rug may damage the fibers. It is most efficient to vacuum the rug one direction at a time.

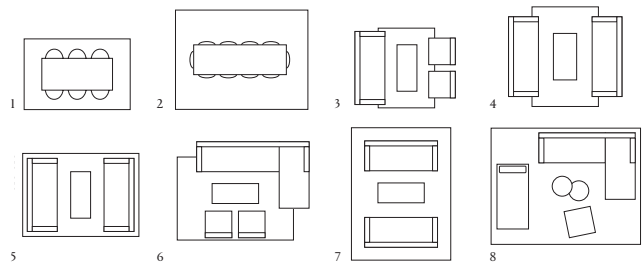
CLEANING ADVICE

We recommend that the rug is cleaned by a professional cleaner, using the extraction method on a flat surface. The quantity and temperature of the water will depend on the material. Good ventilation during the drying process is essential. Shrinkage will be about 3–5%. Kasthall's rugs are not to be machine-washed or dry-cleaned.

At kasthall.com you can read more about our materials, how to look after your rug and our stain guide.

CHOOSING A RUG

Choose the characteristics of the rug, its colour and design to suit the space in which it will be laid. If it is to be laid in a hall, for example, you may choose a type of rug that is more resistant to wear, and a colour that is a little darker and dirt-tolerant. Use a rug as a means of bringing together the rest of the interior. Decide whether you want to place a sofa on the rug or at its edge. If a rug is to be placed underneath a dining table, add at least 60 cm all round the table to allow space for pulling out the chairs. Woven rugs are suitable for most settings, both public and private. Ideal for use in domestic settings such as dining rooms, halls and kitchens, and in retail environments, conference premises and corridors. May also be laid as a carpet.



Examples of commonly used rug sizes:

1. Dining table with 6 chairs: rug size 200x300 cm
2. Dining table with 10 chairs: rug size 300x400 cm
3. Three-seat couch with armchairs: rug size 170x240 cm
4. Three-seat double couch: rug size 200x300 cm
5. Three-seat double couch: rug size 250x350 cm
6. Corner sofa with armchairs: rug size 250x350 cm
7. Three-seat double couch: rug size 300x400 cm
8. Corner sofa with daybed and armchair: rug size 350x450 cm

SUSTAINABILITY AT KASTHALL

Sustainability is rooted in Kasthall's history. It was there when we started and continues today in our work and ambition to contribute to a sustainable future. It is evident in our circular approach to design and in a fully-traceable supply chain to reduce our impact on people and planet. It is part of our commitment to local Swedish production and a made-to-order system that creates less waste. We also use third-party environmental declarations and assessment to ensure reliability. Read more about our sustainability work and philosophy at kasthall.com.

OTHER INFORMATION

- Depending on the materials used and the rug-making process, dimensions may vary by up to 5% so please state maximum or minimum dimensions when placing your order.
- Note that all rugs from Kasthall are made from natural materials. Variations in color and texture can therefore arise between batches of yarn and dye baths.
- Rugs should be laid on an underlay that prevents them from moving on all types of flooring. This extends the life of the rug and reduce the risk of slipping.
- The use of backing fixes the dimensions of a rug and extends its life. This is recommended for rugs that are wider than 200 cm and/or those larger than six sqm.

KASTHALL HEAD QUARTER

Fritslavägen 42 | 511 57 Kinna, Sweden | Phone +46(0)320 205 900 | info@kasthall.com

For the latest updates of our collection, please visit www.kasthall.com

All the designs shown here are protected under law. Kasthall have the property rights and distribution rights worldwide. Copying will be prosecuted.



KASTHALL.COM

ARKAD FAMILY

Design GUNILLA LAGERHEM ULLBERG
Woven rug in pure wool



Arkad, Standing Brick 938



Arkad, Checkerboard 920



KASTHALL HEAD QUARTER

Fritslavägen 42 | 511 37 Kinna, Sweden | Phone +46(0)320 205 900 | info@kasthall.com

For the latest updates of our collection, please visit www.kasthall.com

All the designs shown here are protected under law. Kasthall have the property rights and distribution rights worldwide. Copying will be prosecuted.



KASTHALL.COM

ARKAD FAMILY

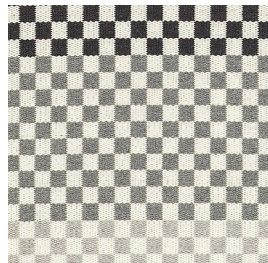
Design GUNILLA LAGERHEM ULLBERG
Woven rug in pure wool

Our web-based Rug Designer program at www.kasthall.com lets you design your own rug easily. For inspiration, you can also see Arkad rugs that others have designed on our website. Choose between 176 colors, from a total of 44 mixed and 132 unicolored yarns to create your Arkad rug. You can find all color samples and color numbers at www.kasthall.com.

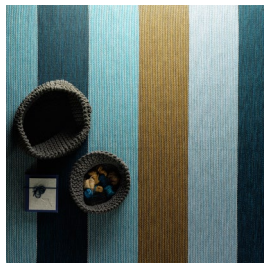
TEMPLATES IN RUG DESIGNER:



Arkad Alida



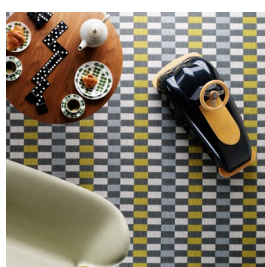
Arkad Aron



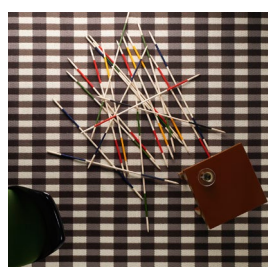
Arkad Axel



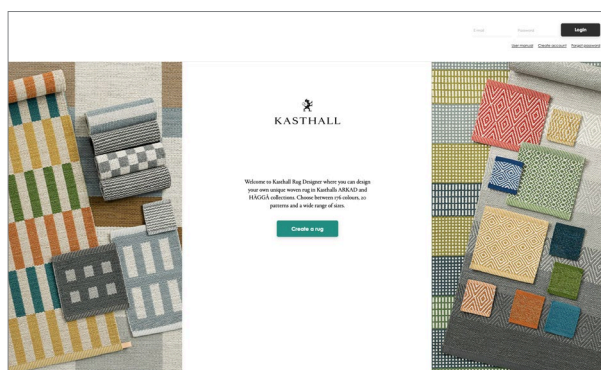
Arkad Checkerboard



Arkad Retro Graphic-Lime



Arkad Rune



KASTHALL HEAD QUARTER

Fritslavägen 42 | 511 57 Kinna, Sweden | Phone +46(0)320 205 900 | info@kasthall.com

For the latest updates of our collection, please visit www.kasthall.com

All the designs shown here are protected under law. Kasthall have the property rights and distribution rights worldwide. Copying will be prosecuted.



KASTHALL.COM