



ARKAD FAMILY  
DESIGN GUNILLA  
LAGERHEM  
ULLBERG

KASTHALL



# PRODUCT SPECIFICATIONS FOR ARKAD FAMILY

This classic wool rug is made according to old Swedish weaving traditions. This gives you the freedom to combine patterns, colors and accents just the way you want. For example, you can choose between ten different patterns and between mixed and single-color yarns, and combine them to suit your individual taste. Choose from a total of 43 mixed and 130 unicolored yarns to create your Arkad rug. You can find all color samples and color numbers at [kasthall.com](http://kasthall.com).

**PRODUCT TYPE:** Woven rug in pure wool

**WEFT MATERIAL:** 100% wool

**WARP MATERIAL:** 100% linen

**TOTAL THICKNESS:** approx. 7 mm

**TOTAL WEIGHT:** approx. 2310 g/m<sup>2</sup>

**SIZE (Checkerboard and Brick):** Standard width: 85, 135, 165, 200, 280, 360, 440, 520, 600 cm. Or choose amongst our suggested sizes; 85x200 cm, 135x200 cm, 165x240 cm, 200x300 cm, 280x380 cm, 360x460 cm, 440x540 cm, 520x620 cm and 600x700 cm

**SIZE (Wide Stripe, Narrow Stripe, Corduroy, Long Stripe, Small Check, Sugar Cube, Standing Brick, Block, Uni, Cubrick):** Standard width: 70, 85, 135, 160, 195, 240, 290, 340, 390, 450, 500, 550, 600 cm. Or choose amongst our suggested sizes; 85x240 cm, 135x200 cm, 160x240 cm, 195x300 cm, 240x350 cm, 290x400 cm and 340x450 cm

**COLORS:** Choose from a total of 43 mixed and 130 unicolored yarns to create your Arkad rug. You can find all color samples and color numbers at: [www.kasthall.com](http://www.kasthall.com)



Wear classification:  
(EN 1307) Class 32  
Commercial General



Luxury rating:  
(EN 1307) LC1



Acoustics properties:  
Sound insulation approx. 24 dB



Acoustics properties:  
Sound absorption  $\alpha_w$  0,15



Fire classification:  
(EN 13501) Cfl-s1



CE (EN 14041)

## ENVIRONMENT AND SUSTAINABILITY

- Meets the requirements for Green Label Plus
- Building assessment program: Swedish Byggarubedömningen ID: 111071, Recommended

**THE FOLLOWING PATTERNS CAN BE COMBINED WITH EACH OTHER:** All patterns can be combined from 200 cm and more.

### GROUP 1

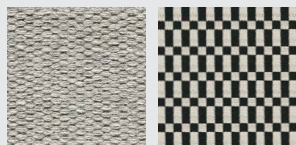


Checkerboard 920 Brick 939

### GROUP 2



Wide Stripe 924 Narrow Stripe 925 Corduroy 936 Long Stripe 922 Small Check 927 Sugar Cube 932 Standing Brick 938 Block 937



Uni Cubrick 935

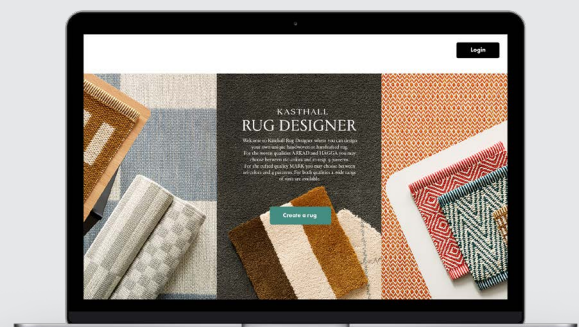
### PATTERN REPEAT SIZE:

Pattern	Width	Squares/Rectangles/Stripes
Checkerboard 920	approx. 85 & 135 cm approx. 165 cm approx. 200–600 cm	approx. 29x28 cm approx. 34x33 cm approx. 42x40 cm
Brick 939	approx. 85 & 135 cm approx. 165 cm approx. 200–600 cm	approx. 4,5x28 cm approx. 4,5x33 cm approx. 4,5x40 cm
Wide Stripe 924	approx. 70–170 cm approx. 175–600 cm	approx. 30 cm approx. 40 cm
Narrow Stripe 925	approx. 70–600 cm	approx. 4,5 cm long
Corduroy 936	approx. 70–600 cm	approx. 1 cm long
Long Stripe 922	approx. 70–600 cm	approx. 4,5 cm wide
Small Check 927	approx. 70–600 cm	approx. 4,5x4,5 cm
Sugar Cube 932	approx. 70–600 cm	approx. 4,5x4,5 cm (report 9x9 cm, 4,5 cm on both sides)
Standing Brick 938	approx. 70–600 cm	approx. 4,5x15 cm
Block 937	approx. 70–600 cm	approx. 4,5x15 cm (report 9x20 cm + 5 cm ending)
Cubrick 935	approx. 70–600 cm	approx. 4,5x9/4,5 cm (report 9x13,5 cm)

### RUG DESIGNER:

You can do your very own rug at our easy accessible and web based design tool Rug Designer that guides you through the process and makes sure that any design you come up with can be made on the weaving looms in our factory in Sweden.

For more info visit: [www.kasthall.com](http://www.kasthall.com)





## CARE ADVICE WOVEN RUGS

To further extend the lifetime of your rug, Kasthall recommends a regular maintenance so that the rug may retain its shape and appearance. If you have a light, single-colour rug you will need to care for it more often than a darker, patterned rug. It is also a good idea to use a rug underlay to prolong the life of your woven rug and prevent it from slipping on any type of floor. Thorough vacuuming is the best, most economical and environmentally friendly method of cleaning. Beating or shaking a rug may damage the fibers. It is most efficient to vacuum the rug one direction at a time.

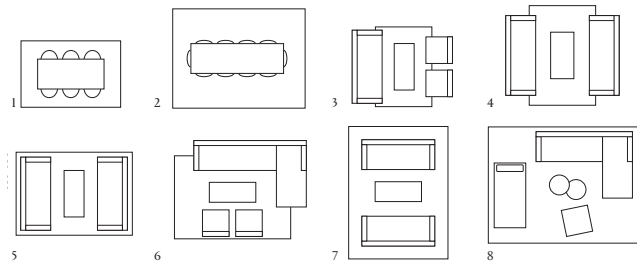
## CLEANING ADVICE

We recommend that the rug is cleaned by a professional cleaner, using the extraction method on a flat surface. The quantity and temperature of the water will depend on the material. Good ventilation during the drying process is essential. Shrinkage will be about 3-5%. Kasthall's rugs are not to be machine-washed or dry-cleaned.

At [www.kasthall.com](http://www.kasthall.com) you can read more about our materials, how to look after your rug and our stain guide.

## CHOOSING A RUG

Choose the characteristics of the rug, its colour and design to suit the space in which it will be laid. If it is to be laid in a hall, for example, you may choose a type of rug that is more resistant to wear, and a colour that is a little darker and dirt-tolerant. Use a rug as a means of bringing together the rest of the interior. Decide whether you want to place a sofa on the rug or at its edge. If a rug is to be placed underneath a dining table, add at least 60 cm all round the table to allow space for pulling out the chairs. Woven rugs are suitable for most settings, both public and private. Ideal for use in domestic settings such as dining rooms, halls and kitchens, and in retail environments, conference premises and corridors. May also be laid as a carpet.



### Examples of commonly used rug sizes:

1. Dining table with 6 chairs: rug size 200x300 cm
2. Dining table with 10 chairs: rug size 300x400 cm
3. Three-seat couch with armchairs: rug size 170x240 cm
4. Three-seat double couch: rug size 200x300 cm
5. Three-seat double couch: rug size 250x350 cm
6. Corner sofa with armchairs: rug size 250x350 cm
7. Three-seat double couch: rug size 300x400 cm
8. Corner sofa with daybed and armchair: rug size 350x450 cm

## SUSTAINABILITY AT KASTHALL

Sustainability is rooted in Kasthall's history. It was there when we started and continues today in our work and ambition to contribute to a sustainable future. It is evident in our circular approach to design and in a fully-traceable supply chain to reduce our impact on people and planet. It is part of our commitment to local Swedish production and a made-to-order system that creates less waste. We also use third-party environmental declarations and assessment to ensure reliability. Read more about our sustainability work and philosophy at [kasthall.com](http://kasthall.com).

## OTHER INFORMATION

- Depending on the materials used and the rug-making process, dimensions may vary by up to 5% so please state maximum or minimum dimensions when placing your order.
- Note that all rugs from Kasthall are made from natural materials. Variations in colour and texture can therefore arise between batches of yarn and dye baths.
- Rugs should be laid on an underlay that prevents them from moving on all types of flooring. This extends the life of the rug and reduce the risk of slipping.
- The use of backing fixes the dimensions of a rug and extends its life. This is recommended for rugs that are wider than 200 cm and/or those larger than six sqm.

### KASTHALL HEAD QUARTER

Phone +46(0)320 205 900 | Fritslavägen 42 | Box 254 | 511 23 Kinna, Sweden | [info@kasthall.se](mailto:info@kasthall.se)

For the latest updates of our collection, please visit [www.kasthall.com](http://www.kasthall.com)

All the designs shown here are protected under law. Kasthall have the property rights and distribution rights worldwide. Copying will be prosecuted.





# ARKAD FAMILY

Design GUNILLA LAGERHEM ULLBERG  
Woven rug in pure wool



Arkad Standing Brick 938



Arkad Checkerboard 920



## KASTHALL HEAD QUARTER

Phone +46(0)320 205 900 | Fritslavägen 42 | Box 254 | 511 23 Kinna, Sweden | [info@kasthall.se](mailto:info@kasthall.se)

For the latest updates of our collection, please visit [www.kasthall.com](http://www.kasthall.com)

*All the designs shown here are protected under law. Kasthall have the property rights and distribution rights worldwide. Copying will be prosecuted.*



KASTHALL.COM



# ARKAD FAMILY

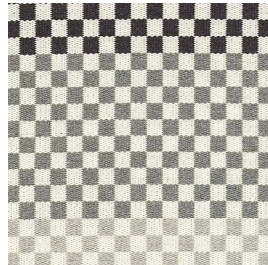
Design GUNILLA LAGERHEM ULLBERG  
Woven rug in pure wool

You can do your very own rug at our easy accessible and web based design tool Rug Designer that guides you through the process and makes sure that any design you come up with can be made on the weaving looms in our factory in Sweden. For more info visit [www.kasthall.com](http://www.kasthall.com).

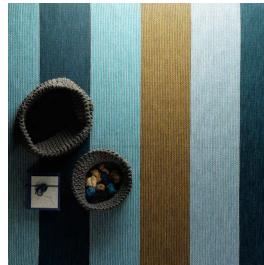
## TEMPLATES IN RUG DESIGNER:



Arkad Alida



Arkad Aron



Arkad Axel



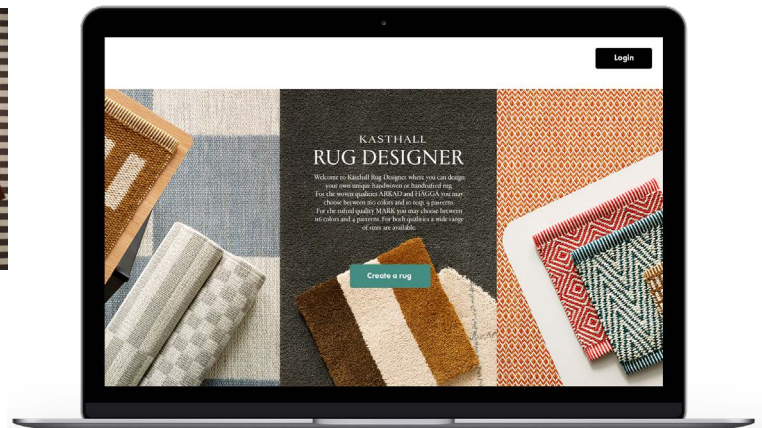
Arkad Checkerboard



Arkad Retro Graphic-Lime



Arkad Rune



## COLORS:

Choose from a total of 43 mixed and 130 unicolored yarns to create your Arkad rug. You can find all color samples and color numbers at [kasthall.com](http://kasthall.com).

