

PRODUCT SPECIFICATION

INGRID ICON



KASTHALL

INGRID ICON

GUNILLA LAGERHEM ULLBERG 2025

Ingrid Icon celebrates craftsmanship in both form and materiality. The design is inspired by classic knitwear – a centuries-old pillar of Scandinavian textile tradition – and has a small-scale structured pattern made in wool for its natural and lasting qualities.



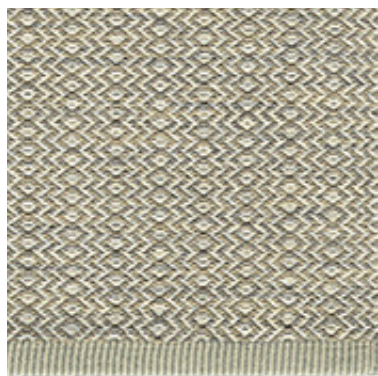
Copper Red 784



Ocean Green 283



Linen Beige 882



Blue Clay 253



Lilac Mist 682



Faded Terracotta 420



White Beige 858



Bark Blue 282

INGRID ICON

GUNILLA LAGERHEM ULLBERG 2025

 rug  w2w  woven  wool

PRODUCT SPECIFICATIONS

Product type: Woven rug in wool

Weft material: 100% wool

Warp material: 100% linen

Total height: approx. 5 mm

Total weight: approx. 2200 g/m²

CURATED SIZES (CM)

85x240

135x200

160x240

195x300

240x350

290x400

340x450

WALL-TO-WALL OPTIONS

Also suitable as an exclusive wall-to-wall carpet. For customizations, please contact customerservice@kasthall.com



Acoustics properties:
Sound insulation
approx. 24 dB



Acoustics properties:
Sound absorption aw 0,1



Suitable for Castor chair only
with additional backing:
(EN 1307) Occasional use



Thermal resistance:
1,8 m² K/W (ISO 8302)



Fire classification:
(EN 13501) Cfl-s1



Luxury class:
(EN 1307) LC1



Wear classification:
(EN 1307) Class 33
Commercial heavy



Häggå-42-1-2017_14041_
2004 CE



THE ART OF PERFECT RUG PLACEMENT

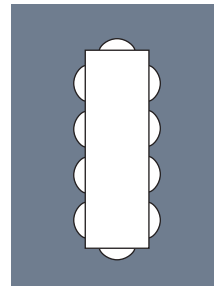
Rugs are very often the visual anchor of a space, serving the purpose of bonding together other design cues and furnishings as well as complementing paintwork or wallpaper choices. They also help define the floor plan and guide the placement of furniture.

BEFORE PLACING, HERE ARE SOME QUESTIONS YOU SHOULD CONSIDER

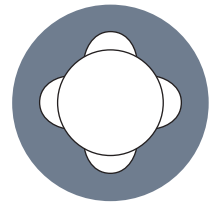
- How do people move around in the room?
- How many items of furniture are in the room and where will they be placed in relation to the rug?
- How are the room's acoustics and how will the rug affect noise insulation?
- How will light, both natural and artificial, affect perception of the rug's color and structure?

WITH TABLE AND CHAIRS

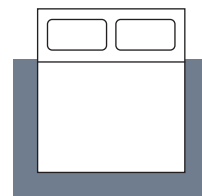
- Make sure the rug is of a scale that ensures all the chairs are still on the rug even when they are fully pulled out.
- To ensure this, we recommend a rug that is 50–60 cm larger than the table in both length and width.



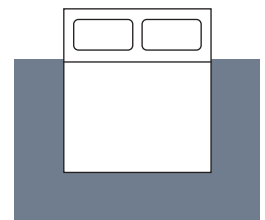
250x350 cm



Ø 240 cm



200x300 cm



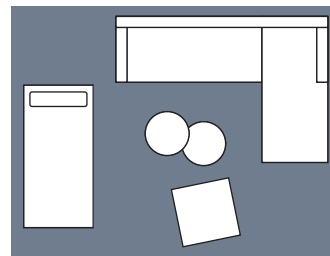
250x350 cm

IN A BEDROOM

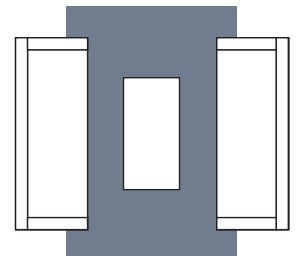
- When placing, focus on creating a unified look between bed and rug.
- Most of the rug should be under the bed, so we recommend choosing a rug that is at least 60 cm larger than the bed in both length and width.

AS PART OF A SOFAGROUP

- Ensure your rug is at least as wide as the sofa.
- Create a unified aesthetic by ensuring part of the rug is under the sofa.
- If the group includes armchairs, choose a rug that is large enough to ensure all four legs of each armchair stay on the rug.



300x400 cm



200x300 cm

THE SECRET TO A LONG- LASTING RUG

Care tips that work

REGULAR CARE ADVICE

- **LIGHT VS. DARK RUGS** – Light, single-color rugs require more frequent care than darker, patterned ones.
- **REGULAR VACUUMING** – The best, most economical, and eco-friendly cleaning method. For best results, vacuum in one direction at a time.
- **BRUSH YOUR TUFTED RUG** – Regular brushing helps lift flattened pile, restore the rug's plushness, and prevent matting.
- **AVOID BEATING OR SHAKING** – This can damage the fibers.
- **SHEDDING IS NORMAL** – Excess fibers will naturally shed over time and do not affect quality.
- **SPEED UP SHEDDING REDUCTION** – Vacuum daily for a short period.
- **LINEN HAND-TUFTED RUGS** – Sensitive to water – use minimal water when removing stains.

DEEP CLEANING ADVICE

For the best care, we recommend professional cleaning using the extraction method on a flat surface. Keep these key points in mind:

- **WATER USAGE** – The amount and temperature depend on the rug's material and pile length.
- **PROPER DRYING** – Ensure good ventilation to prevent moisture buildup.
- **SHRINKAGE** – Expect 2% shrinkage after cleaning.
- **DO NOT MACHINE WASH OR DRY CLEAN** – These methods are not suitable for Kasthall rugs.

OTHER INFORMATION

Depending on the materials used and the rug making process, dimensions may vary by up to +/-2% so please state maximum or minimum dimensions when placing your order.

Note that all rugs from Kasthall are made from natural materials. Variations in color and texture can therefore arise between batches of yarn and dye baths.

For more care tips and our stain guide, visit kasthall.com.



SUSTAINABILITY IN OUR HEART SINCE 1889

Sustainability and social responsibility have been woven into Kasthall's identity from the beginning.

MAKING SUSTAINABLE CHOICES

Sustainability runs deep in the history of Kasthall. More than 130 years ago, our dependence on the nature around us and the support of the local community in the small village of Kinna, Sweden, established a foundation of responsibility that continues to guide us today. From the careful selection of certified raw materials to the precision of our manufacturing process and the well-being of the workers in our supply chain, we strive to minimize our impact at every stage.

We use only the finest linen and wool and our local production ensures every piece is made with care, avoiding excess and minimizing waste. By making rugs that last for generations, we reduce the need for replacements and preserve natural resources.

We create luxury rugs that are not only beautiful and durable but also responsibly made. For us, sustainability is never a finished task, and we are always looking for ways to further reduce our impact and better serve our planet, our community, and our customers.

Read more about our sustainability work here:
<https://www.kasthall.com/catalogs-documents>

SECOND LIFE

We wish to contribute to a world that consumes less and values quality products more, and we want to make it easier for our customers to increase the lifetime of Kasthall rugs. We will therefore strengthen our consumer communication on the impact of our products and provide guidance on what to do with a Kasthall rug if they no longer wish to keep it themselves. In our home market Sweden, Kasthall rugs are sought after items on auctions and second-hand interior platforms.



**BEAUTIFUL RUGS AND CARPETS FOR A LIFE WELL LIVED.
CREATED IN SWEDEN SINCE 1889.**

Founded in Kinna, Sweden, Kasthall is a Swedish rug maker with a legacy spanning over 135 years. Kasthall offers design experiences characterized by quality, innovation, and the mastery of industrial craftsmanship, cultivated through generations. Extending from Stockholm to Tokyo, Kasthall's presence reflects its dedication to sophisticated design tailored for a global audience.

Visit kasthall.com for more information.



KASTHALL

Kasthall HQ Sweden | customerservice@kasthall.com
We reserve the right for possible typographical errors and slight color variations.