

# KASTHALL



**GOOSE EYE ANNIVERSARY**

Product specification

# TABLE OF CONTENTS

---

SPECIFICATION	3
RUG AND ROOM	4
GOOD TO KNOW	6
CARE AND CLEANING	8
SUSTAINABILITY	10

# GOOSE EYE ANNIVERSARY

KASTHALL DESIGN STUDIO | 2025

This new version of the classic Goose Eye rug, originally designed by Gunilla Lagerhem Ullberg, blends various yarn colors to create a presence full of character that honors tradition and innovation. Woven and made from pure wool, this enduring pattern has proven its timeless appeal, representing both elegance and resilience for centuries.



## PRODUCT SPECIFICATIONS

**Product type:** Woven rug in pure wool

**Weft material:** Wool and linen

**Warp material:** 100% linen

**Total thickness:** approx. 5 mm

**Total weight:** approx. 2200 g/m<sup>2</sup>

## SUGGESTED SIZES (CM)

85x240, 135x200, 160x240, 195x300,  
240x350, 290x400, 340x450

## CUSTOM MADE SIZES

Choose width between 70–600 cm  
and any length



Fireclass B-fl-s1



(EN 1307) Class 23  
(EN14215) Class 22  
Class 23  
Domestic Heavy



Luxury class:  
LC1



Impact noise reduction  
24 Db



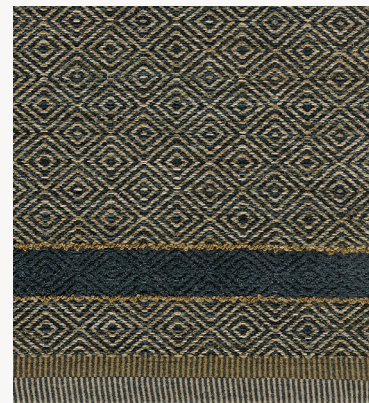
Castor chair  
continuous use



Suitable for  
underfloor heating



Black Velvet



Blue Amber



Minty Fresh



Pink Bliss



Soft Pearl



# A Timeless *Relationship*

Crafted and tactile, humancentric and bold – wherever they're found, Kasthall rugs convey warmth and beauty, creating inviting spaces that nurture human connections and feelings of well-being. To fully enjoy this, here are some tips for placing a rug in a home.



# THE ART OF PERFECT RUG PLACEMENT

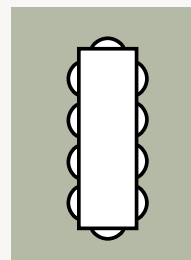
Rugs are very often the visual anchor of a space, serving the purpose of bonding together other design cues and furnishings as well as complementing paintwork or wallpaper choices. They also help define the floor plan and guide the placement of furniture.

## BEFORE PLACING, HERE ARE SOME QUESTIONS YOU SHOULD CONSIDER.

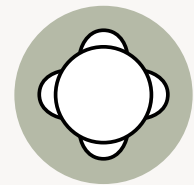
- How do people move around in the room?
- How many items of furniture are in the room and where will they be placed in relation to the rug?
- How are the room's acoustics and how will the rug affect noise insulation?
- How will light, both natural and artificial, affect perception of the rug's color and structure?

## WITH TABLE AND CHAIRS

- Make sure the rug is of a scale that ensures all the chairs are still on the rug even when they are fully pulled out.
- To ensure this, we recommend a rug that is 50–60cm larger than the table in both length and width.



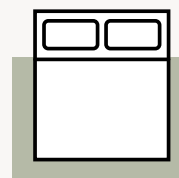
250 x 350 cm



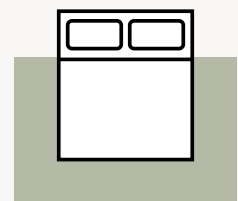
Ø 240 cm

## IN A BEDROOM

- When placing, focus on creating a unified look between bed and rug.
- Most of the rug should be under the bed, so we recommend choosing a rug that is at least 60cm larger than the bed in both length and width.



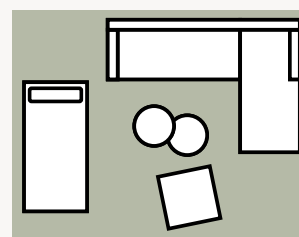
200 x 300 cm



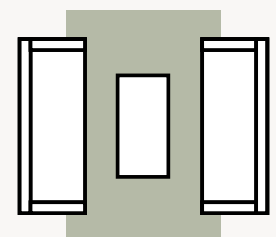
250 x 350 cm

## AS PART OF A SOFAGROUP

- Ensure your rug is at least as wide as the sofa.
- Create a unified aesthetic by ensuring part of the rug is under the sofa.
- If the group includes armchairs, choose a rug that is large enough to ensure all four legs of each armchair stay on the rug.



300 x 400 cm



200 x 300 cm



GOOD TO KNOW

# No More, *No Less*

Every Kasthall rug is created using high-quality natural materials and techniques perfected over generations. To help ensure that your selection fits perfectly in your space and meets your preferences, here's some key information on sizing, customization, and recommended add-ons to consider before ordering a Kasthall rug.



## GOOD TO KNOW

### CURATED SIZES

The curated sizes celebrates the skills of the masters in the Kasthall Design Studio. Unique, made to order, these rugs are available in set sizes but also with a degree of flexibility for the customer.

### PRE-SET WIDTHS

Our looms are pre-set for certain widths, but we are happy to reset the loom for any special width you may need, at a customized price point.

### CUSTOMIZED OPTIONS

Made to your exact specification, within our ability. Available in rugs, wall-to-wall and broadloom, the customized options gives the client true artistic license to create their own vision of how one of our rugs should look and feel. Individually priced and made to order, this offer is an opportunity to add a personal signature and unique character to any interior space.

### SIZE TOLERANCES

Depending on the natural materials used and the varied hand-crafted processes in production, dimensions of the rug and carpet may vary, so please state maximum or minimum dimensions when placing your order.

Woven rugs: +-5%

Tufted rugs: +-2%

Broadloom: +-3%

### ADD-ONS KASTHALL WOVEN COLLECTIONS

Rug Underlay is recommended for all Kasthall rugs and can be used on all types of flat floors. Underlay has a slightly self-adhesive surface that ensures the rug will not slip on the floor. Underlay can be used on floors with underfloor heating and can be washed at up to 40°C. The use of rug underlay extends the life of a rug.

Backing is a treatment in which the underside of woven rugs is coated with acrylate adhesive. This stabilises the rug and extends its life. It is recommended for woven rugs wider than 200 cm or larger than 6 square metres in area.

### FABRIC BACKING

A textile weave used for woven rugs that are to be cut to fit into tailored shapes.

### ADD-ONS AREA RUGS

**BINDING PER RUNNING METER:** When binding the edge of an area rug we place a 30 mm polyester strip, of which about 15 mm becomes visible, along the edge of the rug. Color matched to the rug or contrasting color by request. Recommended for public environments.

Available colors for binding:

Venetian Red 101, Wine Red 102, Blue Black 201, Dark Petrol 301, Ochre 401, Black 501, Dark Grey Brown 502, Dark Grey Green 503, Dark Grey Blue 504, Mid Grey 505, Granite Grey 506, Dark Brown 701, Nougat 702, Sand 801, Light Beige 802.

**WHIPPING PER RUNNING METER:** Whipping entails sewing an overlock stitch with 100% wool or polyamide along the edge of the rug. The seam is matched to the color of the area rug. NOT recommended for public environments.

### WARRANTY

Kasthall guarantees for 10 years from the date of the original invoice, that standard products are free from manufacturing defects and incorrect materials. The guarantee applies under the condition that the product is used correctly according to the recommendations, care advice and product performance as shown in Kasthall's product datasheet.



# Care For What *you* Adore

A well-cared-for rug lasts for generations. With simple routines and the right approach, its beauty and quality endure, aging gracefully over time and remaining a lasting part of your space.





# THE SECRET TO A LONG-LASTING RUG – CARE TIPS THAT WORK

## REGULAR CARE ADVICE

To extend the lifetime of your rug, follow these care recommendations:

- **REGULAR MAINTENANCE** – Helps retain shape and appearance.
- **LIGHT VS. DARK RUGS** – Light, single-color rugs require more frequent care than darker, patterned ones.
- **VACUUMING** – The best, most economical, and eco-friendly cleaning method. For best results, vacuum in one direction at a time.
- **AVOID BEATING OR SHAKING** – This can damage the fibers.
- **SHEDDING IS NORMAL** – Excess fibers will naturally shed over time and do not affect quality.
- **SPEED UP SHEDDING REDUCTION** – Vacuum daily for a short period.
- **LINEN HAND-TUFTED RUGS** – Sensitive to water—use minimal water when removing stains.

## DEEP CLEANING ADVICE

For the best care, we recommend professional cleaning using the extraction method on a flat surface. Keep these key points in mind:

- **WATER USAGE** – The amount and temperature depend on the rug's material and pile length.
- **PROPER DRYING** – Ensure good ventilation to prevent moisture buildup.
- **SHRINKAGE** – Expect 3–5% shrinkage after cleaning.
- **DO NOT MACHINE WASH OR DRY CLEAN** – These methods are not suitable for Kasthall rugs.

## OTHER INFORMATION

Depending on the materials used and the rug making process, dimensions may vary by up to 5% so please state maximum or minimum dimensions when placing your order.

Note that all rugs from Kasthall are made from natural materials. Variations in colour and texture can therefore arise between batches of yarn and dye baths.

For more care tips and our stain guide, visit [www.kasthall.com](http://www.kasthall.com).

# Sustainability In Our Heart *since* 1889

Sustainability and social responsibility have been woven into Kasthall's identity from the beginning.





# SUSTAINABILITY

## MAKING SUSTAINABLE CHOICES

Sustainability runs deep in the history of Kasthall. More than 130 years ago, our dependence on the nature around us and the support of the local community in the small village of Kinna, Sweden, established a foundation of responsibility that continues to guide us today. From the careful selection of certified raw materials to the precision of our manufacturing process and the well-being of the workers in our supply chain, we strive to minimize our impact at every stage.

We use only the finest linen and wool and our local, made-to-order production ensures every piece is made with care, avoiding excess and minimizing waste. By making rugs that last for generations, we reduce the need for replacements and preserve natural resources.

We create luxury rugs that are not only beautiful and durable but also responsibly made. For us, sustainability is never a finished task, and we are always looking for ways to further reduce our impact and better serve our planet, our community, and our customers.

Read more on [kasthall.com](https://kasthall.com)

## SECOND LIFE

We wish to contribute to a world that consumes less and values quality products more, and we want to make it easier for our customers to increase the lifetime of Kasthall rugs. We will therefore strengthen our consumer communication on the impact of our products and provide guidance on what to do with a Kasthall rug if they no longer wish to keep it themselves. In our main market Sweden, Kasthall rugs are sought after items on auctions and second-hand interior platforms.