

KASTHALL



FASAD COLLECTION

Product specification

TABLE OF CONTENTS

SPECIFICATION	3
RECYCLED WOOL	5
RUG AND ROOM	7
CARE AND CLEANING	9
SUSTAINABILITY	11

FASAD Duo

DAVID CHIPPERFIELD | 2025

Fasad Duo is part of our pioneering Fasad collection, which is our first to feature recycled post-consumer yarn. The fibers obtained from the recycling process are the first step in creating the new, high-quality yarn that makes up 25 percent of the wool used in the finished woven rug.



PRODUCT SPECIFICATIONS

Product type: Woven bouclé rug in recycled wool yarn and pure linen

Weft material: 80% wool (hereof 25% recycled) and 20% linen

Warp material: 100% linen

Total thickness: approx. 10 mm

Total weight: approx. 2750 g/m²

SUGGESTED SIZES (CM)

90x240, 140x200, 170x240, 200x300, 250x350, 300x400, 350x450

CUSTOM MADE SIZES

Choose width between 70–600 cm and any length



Fireclass B-fl-s1



(EN 1307) Class 23
(EN14215) Class 22
Class 23
Domestic Heavy



Luxury class:
LC1



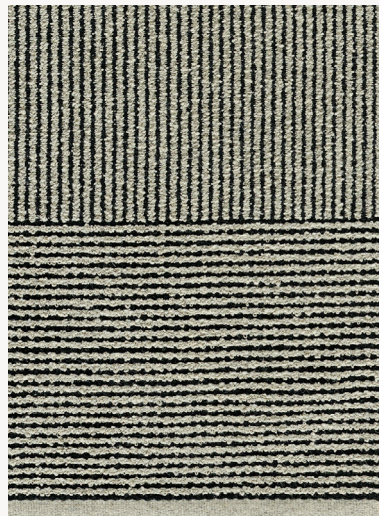
Castor chair
continuous use



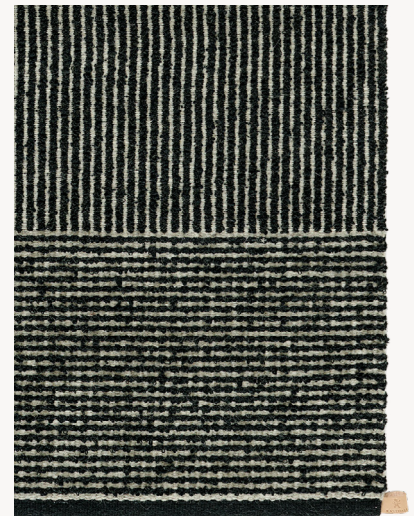
LIGHT BEIGE / LIGHT GREY 805



DARK GREEN / LIGHT GREY 305



LIGHT GREY / DARK BLACK 505



DARK BLACK / LIGHT GREY 501

FASAD Uno

DAVID CHIPPERFIELD | 2025

Fasad Uno is part of our pioneering Fasad collection, which is our first to feature recycled post-consumer yarn. The fibers obtained from the recycling process are the first step in creating the new, high-quality yarn that makes up 25 percent of the wool used in the finished woven rug.



PRODUCT SPECIFICATIONS

Product type: Woven bouclé rug in recycled wool yarn and pure linen

Weft material: 80% wool (hereof 25% recycled) and 20% linen

Warp material: 100% linen

Total thickness: approx. 10 mm

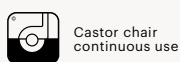
Total weight: approx. 2750 g/m²

SUGGESTED SIZES (CM)

90x240, 140x200, 170x240, 200x300, 250x350, 300x400, 350x450

CUSTOM MADE SIZES

Choose width between 70–600 cm and any length



LIGHT BEIGE 868



DARK GREEN 300



LIGHT GREY 506



DARK BLACK 500

RECYCLED WOOL

Renewable *by* Design

In what is believed to be a world's first for the interior design industry, Kasthall's rug collection created in collaboration with acclaimed architect David Chipperfield features recycled wool yarn.



RECYCLED WOOL

WORLD'S FIRST WOVEN RUG COLLECTION FEATURING RECYCLED WOOL YARN.

Recycled wool yarn – or as it is sometimes called, mechanical or regenerated wool – is the result of a process that transforms previously used wool back into a high-quality fibrous material. In the case of the Fasad collection, this wool is sourced from mattresses which otherwise would have simply gone to waste. The fibers obtained from the regeneration process are the first step in creating the new, high-quality yarns that comprise 25% of the wool used in the Fasad collection. Lena Jiseborn, Designer at Kasthall, explains:

“These fibers are tough, water resistant and long-lasting. However, it’s important to note that they retain the soft, tactile characteristics that make wool such an iconic and loved material in both interior design, fashion and many other areas.”

25%

Recycled wool yarn used in the Fasad collection.

Compared to the production of virgin wool, regenerated wool has a significantly reduced environmental impact. It can also be considered more ecological as it doesn't require intensive exploitation of vast tracts of land for grazing and sheep breeding. Lena Jiseborn continues:

“Fasad’s sustainability profile is a standout for a rug of this type. But consider the other benefits of the new material such as extended product life and increased quality and it’s clear that the collection’s beauty is more than skin deep.”

The desire to use this new, pioneering material had a strong influence on the creative process that led to Fasad. Creating the bouclé yarn for the collection provided several challenges that tested both the handicraft skills and design experience of the team from Kasthall and Chipperfield. Dirk Gschwind, Director of Chipperfield’s Berlin studio and Kasthall’s creative collaborator in the project elaborates:

“We wanted to create something beautiful with a subdued but strong personality. Layering and creating structure in the rug were key to this and after many iterations in the design studio and by the looms, the recycled wool yarn proved to be more than capable of adding the physical and visual character we were seeking.”

Kasthall’s collaboration with the Martinelli Ginetto Group exemplifies the company’s will to create objects of timeless beauty without needlessly consuming new resources. It also marks an important milestone in their sustainability journey, as CEO Mircku Kullberg explains:

“For the first time, Kasthall is using material that contains post-consumer waste from outside parties. The benefits this delivers and the potential it holds can’t be underestimated. At the same time, we’re proud to be the first rug designers to innovate and create with recycled wool yarn.”

A Timeless *Relationship*

Crafted and tactile, humancentric and bold – wherever they're found, Kasthall rugs convey warmth and beauty, creating inviting spaces that nurture human connections and feelings of well-being. To fully enjoy this, here are some tips for placing a rug in a home.



THE ART OF PERFECT RUG PLACEMENT

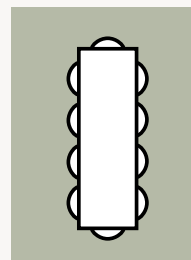
Rugs are very often the visual anchor of a space, serving the purpose of bonding together other design cues and furnishings as well as complementing paintwork or wallpaper choices. They also help define the floor plan and guide the placement of furniture.

BEFORE PLACING, HERE ARE SOME QUESTIONS YOU SHOULD CONSIDER.

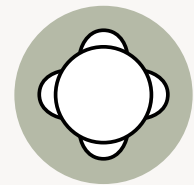
- How do people move around in the room?
- How many items of furniture are in the room and where will they be placed in relation to the rug?
- How are the room's acoustics and how will the rug affect noise insulation?
- How will light, both natural and artificial, affect perception of the rug's color and structure?

WITH TABLE AND CHAIRS

- Make sure the rug is of a scale that ensures all the chairs are still on the rug even when they are fully pulled out.
- To ensure this, we recommend a rug that is 50–60cm larger than the table in both length and width.



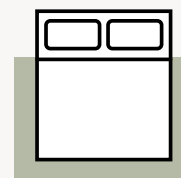
250 x 350 cm



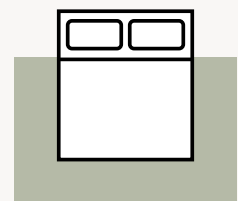
Ø 240 cm

IN A BEDROOM

- When placing, focus on creating a unified look between bed and rug.
- Most of the rug should be under the bed, so we recommend choosing a rug that is at least 60cm larger than the bed in both length and width.



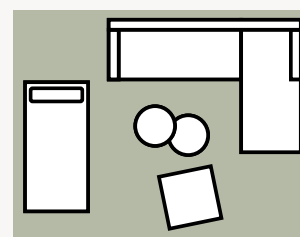
200 x 300 cm



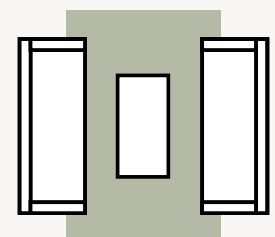
250 x 350 cm

AS PART OF A SOFAGROUP

- Ensure your rug is at least as wide as the sofa.
- Create a unified aesthetic by ensuring part of the rug is under the sofa.
- If the group includes armchairs, choose a rug that is large enough to ensure all four legs of each armchair stay on the rug.



300 x 400 cm



200 x 300 cm

GOOD TO KNOW

Personalized *to* Perfection

Each rug is made with precision, using high-quality materials and expert techniques. To ensure the perfect fit for any space, here is key information on sizing, customization, and recommended add-ons before placing an order.



GOOD TO KNOW

CURATED SIZES

The curated sizes celebrates the skills of the masters in the Kasthall Design Studio. Unique, made to order, these rugs are available in set sizes but also with a degree of flexibility for the customer.

PRE-SET WIDTHS

Our looms are pre-set for certain widths, but we are happy to reset the loom for any special width you may need, at a customized price point.

CUSTOMIZED OPTIONS

Made to your exact specification, within our ability. Available in rugs, wall-to-wall and broadloom, the customized options gives the client true artistic license to create their own vision of how one of our rugs should look and feel. Individually priced and made to order, this offer is an opportunity to add a personal signature and unique character to any interior space.

SIZE TOLERANCES

Depending on the natural materials used and the varied hand-crafted processes in production, dimensions of the rug and carpet may vary, so please state maximum or minimum dimensions when placing your order.

Woven rugs: +-5%

Tufted rugs: +-2%

Broadloom: +-3%

ADD-ONS KASTHALL WOVEN COLLECTIONS

Rug Underlay is recommended for all Kasthall rugs and can be used on all types of flat floors. Underlay has a slightly self-adhesive surface that ensures the rug will not slip on the floor. Underlay can be used on floors with underfloor heating and can be washed at up to 40°C. The use of rug underlay extends the life of a rug.

Backing is a treatment in which the underside of woven rugs is coated with acrylate adhesive. This stabilises the rug and extends its life. It is recommended for woven rugs wider than 200 cm or larger than 6 square metres in area.

FABRIC BACKING

A textile weave used for woven rugs that are to be cut to fit into tailored shapes.

ADD-ONS AREA RUGS

BINDING PER RUNNING METER: When binding the edge of an area rug we place a 30 mm polyester strip, of which about 15 mm becomes visible, along the edge of the rug. Color matched to the rug or contrasting color by request. Recommended for public environments.

Available colors for binding:

Venetian Red 101, Wine Red 102, Blue Black 201, Dark Petrol 301, Ochre 401, Black 501, Dark Grey Brown 502, Dark Grey Green 503, Dark Grey Blue 504, Mid Grey 505, Granite Grey 506, Dark Brown 701, Nougat 702, Sand 801, Light Beige 802.

WHIPPING PER RUNNING METER: Whipping entails sewing an overlock stitch with 100% wool or polyamide along the edge of the rug. The seam is matched to the color of the area rug. NOT recommended for public environments.

WARRANTY

Kasthall guarantees for 10 years from the date of the original invoice, that standard products are free from manufacturing defects and incorrect materials. The guarantee applies under the condition that the product is used correctly according to the recommendations, care advice and product performance as shown in Kasthall's product datasheet.

Care For What *you* Adore

A well-cared-for rug lasts for generations. With simple routines and the right approach, its beauty and quality endure, aging gracefully over time and remaining a lasting part of your space.



THE SECRET TO A LONG-LASTING RUG – CARE TIPS THAT WORK

REGULAR CARE ADVICE

To extend the lifetime of your rug, follow these care recommendations:

- **REGULAR MAINTENANCE** – Helps retain shape and appearance.
- **LIGHT VS. DARK RUGS** – Light, single-color rugs require more frequent care than darker, patterned ones.
- **VACUUMING** – The best, most economical, and eco-friendly cleaning method. For best results, vacuum in one direction at a time.
- **AVOID BEATING OR SHAKING** – This can damage the fibers.
- **SHEDDING IS NORMAL** – Excess fibers will naturally shed over time and do not affect quality.
- **SPEED UP SHEDDING REDUCTION** – Vacuum daily for a short period.
- **LINEN HAND-TUFTED RUGS** – Sensitive to water—use minimal water when removing stains.

DEEP CLEANING ADVICE

For the best care, we recommend professional cleaning using the extraction method on a flat surface. Keep these key points in mind:

- **WATER USAGE** – The amount and temperature depend on the rug's material and pile length.
- **PROPER DRYING** – Ensure good ventilation to prevent moisture buildup.
- **SHRINKAGE** – Expect 3–5% shrinkage after cleaning.
- **DO NOT MACHINE WASH OR DRY CLEAN** – These methods are not suitable for Kasthall rugs.

OTHER INFORMATION

Depending on the materials used and the rug making process, dimensions may vary by up to 5% so please state maximum or minimum dimensions when placing your order.

Note that all rugs from Kasthall are made from natural materials. Variations in colour and texture can therefore arise between batches of yarn and dye baths.

For more care tips and our stain guide, visit www.kasthall.com.

Sustainability In Our Heart *since* 1889

Sustainability and social responsibility have been woven into Kasthall's identity from the beginning.



SUSTAINABILITY

MAKING SUSTAINABLE CHOICES

Sustainability runs deep in the history of Kasthall. More than 130 years ago, our dependence on the nature around us and the support of the local community in the small village of Kinna, Sweden, established a foundation of responsibility that continues to guide us today. From the careful selection of certified raw materials to the precision of our manufacturing process and the well-being of the workers in our supply chain, we strive to minimize our impact at every stage.

We use only the finest linen and wool and our local, made-to-order production ensures every piece is made with care, avoiding excess and minimizing waste. By making rugs that last for generations, we reduce the need for replacements and preserve natural resources.

We create luxury rugs that are not only beautiful and durable but also responsibly made. For us, sustainability is never a finished task, and we are always looking for ways to further reduce our impact and better serve our planet, our community, and our customers.

Read more on kasthall.com

SECOND LIFE

We wish to contribute to a world that consumes less and values quality products more, and we want to make it easier for our customers to increase the lifetime of Kasthall rugs. We will therefore strengthen our consumer communication on the impact of our products and provide guidance on what to do with a Kasthall rug if they no longer wish to keep it themselves. In our main market Sweden, Kasthall rugs are sought after items on auctions and second-hand interior platforms.